

# Tube Lightening Guide

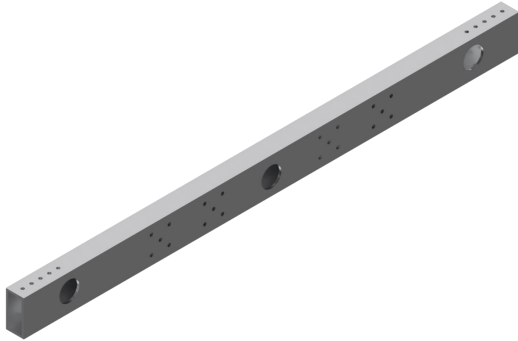
Document #190127a

January 27, 2019

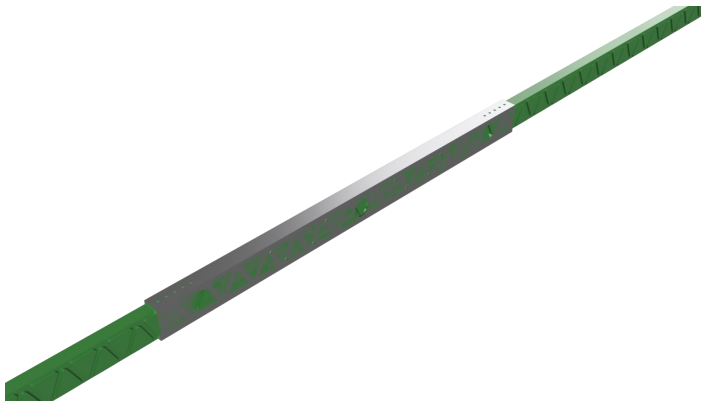


This guide will walk you through the process of lightening 2x1 frame tubes.

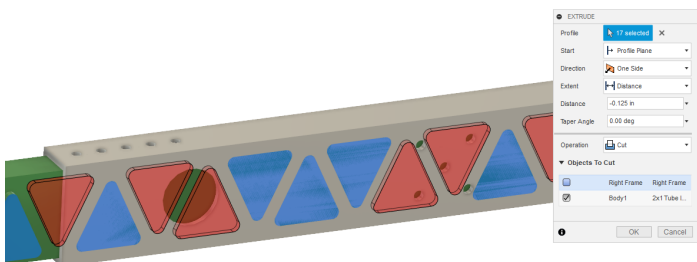
- Activate the tube, including all holes necessary for assembly and mounting.



- Drag the “2x1 Tube Lightening Hole Jig” into the main file. Then, align the center of the top face of the jig to the center of the top inside face of the tube. Right click the component and break it so it will become editable.



- Press the “E” key to extrude, then select all triangular faces on the jig that exist on necessary holes to avoid removing these necessary holes from the tube. Also remove the triangles at the end to avoid awkward holes. Then, extrude the triangles away (0.125”). Repeat on other side.



# Tube Lightning Guide

Document #190127a

January 27, 2019



- Finally, use “Combine” to cut out the lightning holes. Use the tube as the body, the jig as the tool, and uncheck “Keep tools.” When this step is done, you can remove or delete the “2x1 Tube Lightning Holes Jig” component as it is no longer necessary.



- Finished tube.

